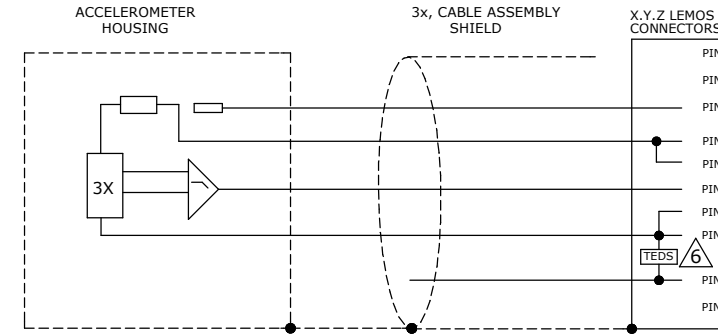


SPECIFICATIONS:

All values are typical at +24°C (+75°F), 12Vdc excitation and apply to each axis unless otherwise stated.

PARAMETERS	VALUE							UNITS
DASH NO.	-002	-005	-010	-030	-050	-100	-200	
DYNAMIC RANGE	±2	±5	±10	±30	±50	±100	±200	g
SENSITIVITY ±10% (DIFFERENTIAL)	1000	400	200	67	40	20	10	mV/g
FREQ RESPONSE ±5%	0-200	0-600	0-800	0-800	0-800	0-1000	0-1000	Hz
RESIDUAL NOISE (PASSBAND)	200	250	250	250	250	300	300	µVrms
SHOCK LIMIT (any direction)	2000	5000	5000	5000	5000	5000	5000	g

PARAMETERS	VALUE		UNITS
ZERO ACCELERATION OUTPUT (DIFFERENTIAL)	±50		mV
TRANSVERSE SENSITIVITY	<3		%
NON-LINEARITY (BFSL)	±1		%FSO
THERMAL ZERO SHIFT, REFERENCE 24°C (75°F)	-40 to +100°C (-40 to +212°F)	±2.5	%FSO
	-54 to +121°C (-65 to +250°F)	±3.0	%FSO
THERMAL SENSITIVITY SHIFT, REFERENCE 24°C (75°F)	-40 to +100°C (-40 to +212°F)	±3.0	%
	-54 to +121°C (-65 to +250°F)	±3.5	%
EXCITATION VOLTAGE	8 to 36		Vdc
EXCITATION CURRENT PER CHANNEL	<5		mA
COMMON MODE VOLTAGE	1.6		Vdc
FULL SCALE OUTPUT VOLTAGE	±2		Vpk (FSO=2V)
OUTPUT IMPEDANCE	<100		Ω
INSULATION RESISTANCE (@100Vdc) BETWEEN CHANNELS, CHANNELS TO SHIELD	>100		MΩ
TURN ON TIME	<100		mSEC
OPERATING AND STORAGE TEMPERATURE	-54 to +121 (-65 to +250)		°C (°F)
CONSTRUCTION	TITANIUM		
HUMIDITY (ACTIVE ELEMENT AND HI IMP ELECTRONICS)	Hermetic Seal		
HUMIDITY (HOUSING & LO IMP ELECTRONICS)	Silicone Potted IP65		
WEIGHT (CABLE NOT INCLUDED)	30		Grams
MOUNTING TORQUE	6 (0.7)		lb-in (Nm)



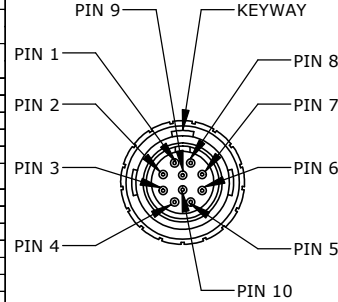
NOTES:

- TITANIUM HOUSING. SINGLE-POINT GROUNDING BY USER REQUIRED TO PREVENT GROUND LOOPS (SHIELD OF MATING CABLE MUST FLOAT ON USER END WHEN MOUNTING ACCELEROMETER TO CONDUCTIVE SURFACE). FROM MOUNTING SURFACE TO EACH CHANNEL AND FROM CHANNEL TO CHANNEL.
- MODEL NUMBER:
4630M13-XXX-ZZZ-C
CABLE LENGTH (INCHES) [e.g. 060
IS 60 INCHES OF CABLE]
RANGE (g) [e.g. 010 IS 10g RANGE]

- FOR #4-40 (UNIFIED SCREW THREAD) OR M3 METRIC SOCKET HEAD CAP SCREW.
- SEE TABULATION FOR LENGTH TOLERANCE.
- LEMO FGG 2G.310.CLAD52Z CONNECTOR DESCRIPTION :

PIN 1 = +EXC (SUPPLY) PIN 7 = N/C
PIN 2 = -EXC (SUPPLY) PIN 8 = TEDS
PIN 3 = INPUT+ PIN 9 = N/C
PIN 4 = INPUT- PIN 10 = N/C
PIN 5 = SENSE+ HOUSING = SHIELD
PIN 6 = SENSE-

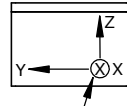
- TEDS COMPLIANT TO 1451.4



FUNCTION

PIN 9	N/C
PIN 7	N/C
PIN 4	-OUT
PIN 1	+EXC
PIN 5	+SNS
PIN 3	+OUT
PIN 6	-SNS
PIN 2	-EXC
PIN 8	TEDS
PIN 10	N/C
SHIELD	SHIELD

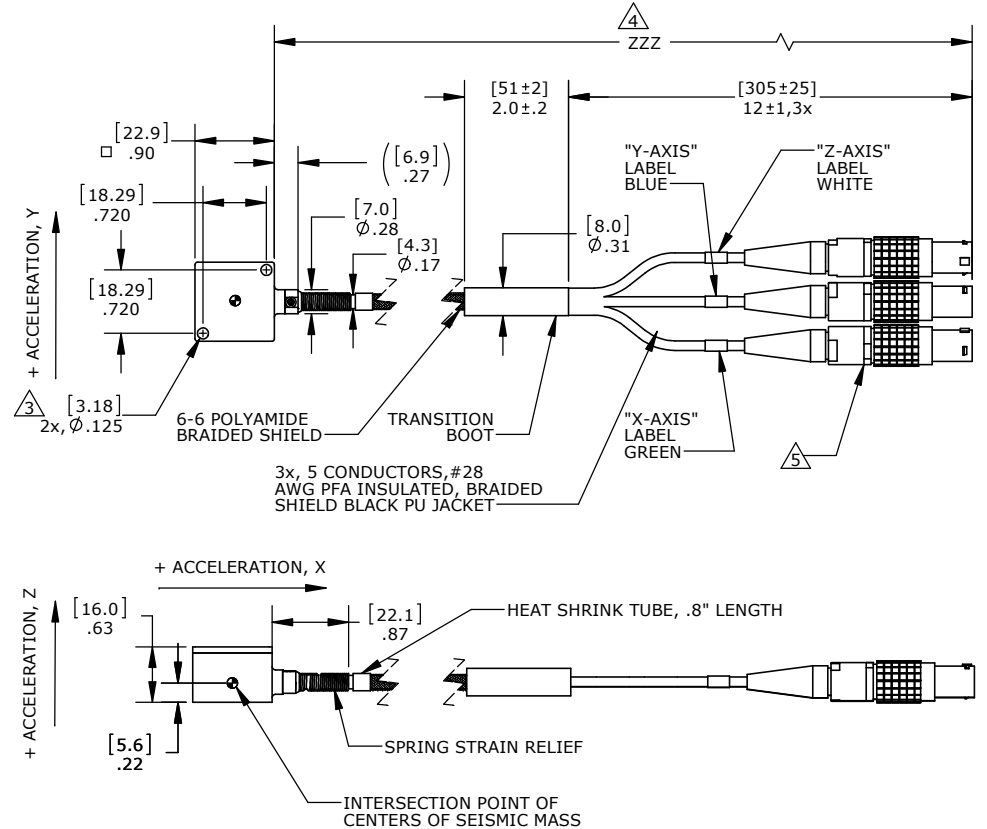
LASER MARKED PERMANENTLY



TABULATION 4	
ZZZ	TOLERANCE
≤ 4 [102]	+0.5 [13] -0 [0]
> 4 [102] & ≤ 12 [305]	+1 [25] -0 [0]
> 12 [305] & ≤ 60 [1524]	+2 [51] -0 [0]
> 60 [1524] & ≤ 120 [3048]	+4 [102] -0 [0]
> 120 [3048] & ≤ 360 [9144]	+6 [152] -0 [0]
> 360 [9144]	+12 [305] -0 [0]

REVISIONS

REV	DESCRIPTION	DRAWN/DATE	CHECKED/DATE	APPR./DATE
2	UPDATE TEDS DESCRIPTION	CL/8-29-17		
3	UPDATE	CL/8-30-17		



UNLESS OTHERWISE SPECIFIED:

NAME	DATE
DRAWN	C.L.I. 8-28-17
CHECKED	
ENG APPR.	
MFG APPR.	
Q.A. APPR.	
PROPRIETARY AND CONFIDENTIAL THE INFORMATION CONTAINED IN THIS DRAWING IS THE SOLE PROPERTY OF MEASUREMENT SPECIALTIES, INC. ANY REPRODUCTION IN PART OR AS A WHOLE WITHOUT THE WRITTEN PERMISSION OF MEASUREMENT SPECIALTIES, INC. IS PROHIBITED.	
COMMENTS: DO NOT SCALE DRAWING INTERPRET GEOMETRIC TOLERANCING PER ANSI Y14.3M-1994	



Aliso Viejo, CA 92656

TITLE:
MODEL 4630M13-XXX-ZZZ, TRIAX ACCELEROMETER

SIZE DWG. NO.	REV
B OD-4630M13-XXX-ZZZ-C	3
SCALE: NTS	WEIGHT:
SHEET 1 OF 1	