

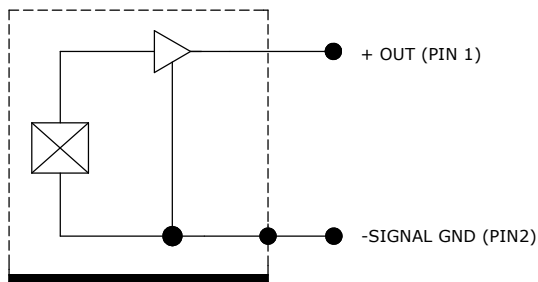
SPECIFICATIONS:

All values are typical at +24°C (+75°F), 24Vdc, 4mA and 80 Hz unless otherwise stated.

PARAMETERS	VALUE				UNITS
DASH NO.	-0005	-0010	-0050	-0500	
DYNAMIC RANGE	±5	±10	±50	±500	g
SENSITIVITY, ±10%	1000	500	100	10	mV/g
FREQUENCY RESPONSE, ±1dB	1-3000	1-3000	2-4000	2-6000	Hz
NATURAL FREQUENCY	>18	>18	>24	>24	kHz
TRANSVERSE SENSITIVITY	<5	<5	<5	<5	%
TEMPERATURE RESPONSE	±10	±10	±10	±10	%
NON-LINEARITY(BFSL)	±1	±1	±1	±1	%FSO
RESIDUAL NOISE (1Hz to 10kHz)	0.0006	0.0008	0.001	0.002	g RMS
SHOCK LIMIT	5000	5000	5000	5000	g
WEIGHT	20	20	16	16	Grams

PARAMETERS	VALUE	UNITS
BIAS VOLTAGE	8 to 12	Vdc
BIAS VOLTAGE, -54 to +100°C	6 to 13	Vdc
FULL SCALE OUTPUT VOLTAGE	±5	Vpk
OUTPUT IMPEDANCE	<100	Ω
INSULATION RESISTANCE (@ 100Vdc)	>100	MΩ
GROUNDING	CASE ISOLATED	
SUPPLY (COMPLIANCE) VOLTAGE	18 to 32	Vdc
SUPPLY CURRENT	2 to 10	mA
WARM-UP TIME	<5	sec
OPERATING TEMPERATURE	-54 to +100	°C
HUMIDITY	HERMETICALLY SEALED	
MATERIAL(CASING)	STAINLESS STEEL	
SENSING ELEMENT	PIEZO CERAMIC	

ACCELEROMETER



NOTES:

1. MODEL NUMBER:

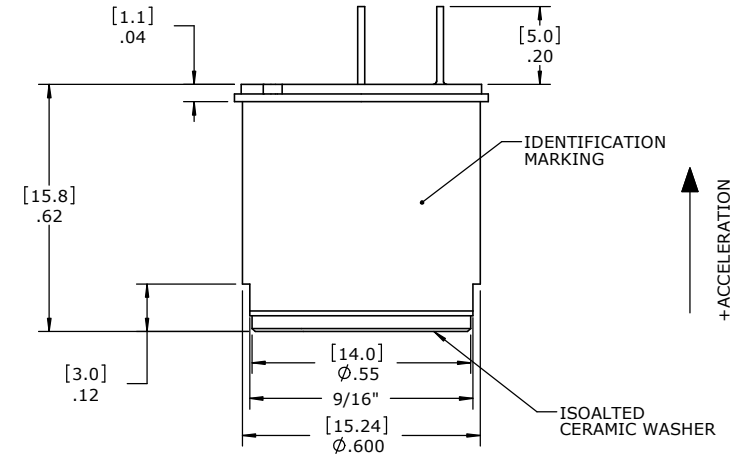
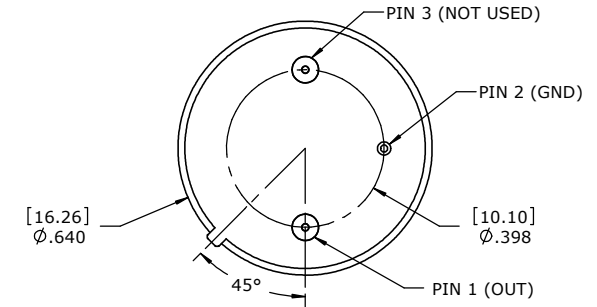
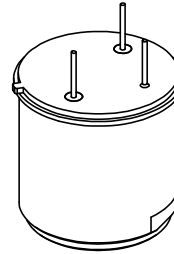
808M4-ZZZZ-XX


STANDARD SPECIAL REQUIREMENTS, OTHERWISE LEAVE BLANK
RANGE (g) [e.g. 0050 IS 50g RANGE]

2. PRINT ALL CALIBRATION DATA OF ONE LOT PRODUCTS IN THE SAME PAGE. INCLUDE MODEL, S/N, SENSITIVITY, BIAS AND CAL DATE.

REVISIONS

REV	DESCRIPTION	DRAWN/DATE	CHECKED/DATE	APPR./DATE
B	NOTE 2 ADDED	AR/1-21-13	MZ/1-21-13	HX/1-21-13
C	CHANGE THE SENSITIVITY TOLERANCE TO 10%.	JZ/3-21-14	MZ/3-21-14	HX/3-21-14
D	THE PIN LENGTH IS CHANGED FROM .275" TO .20".	JZ/6-14-16	AR/6-14-16	HX/6-14-16



UNLESS OTHERWISE SPECIFIED:		NAME	DATE
DIMENSIONS ARE IN INCHES [MM]		DRAWN	A. Rao 1-07-13
TOLERANCES:		CHECKED	M. Zhong 1-07-13
ANGULAR ±5° TWO PLACE DECIMAL ±.03 [.8] THREE PLACE DECIMAL ±.010 [.25]		ENG APPR.	H. Xu 1-07-13
MATERIAL		MFG APPR.	
FINISH		Q.A. APPR.	
PROPRIETARY AND CONFIDENTIAL THE INFORMATION CONTAINED IN THIS DRAWING IS THE SOLE PROPERTY OF MEASUREMENT SPECIALTIES, INC. ANY REPRODUCTION IN PART OR AS A WHOLE WITHOUT THE WRITTEN PERMISSION OF MEASUREMENT SPECIALTIES, INC. IS PROHIBITED.		COMMENTS:	
		DO NOT SCALE DRAWING	
		INTERPRET GEOMETRIC TOLERANCING PER ANSI Y14.5M-1994	
			
Aliso Viejo, CA 92656			
TITLE:			
MODEL 808M4, ACCELEROMETER			
SIZE	DWG. NO.		REV
B	OD-808M4		D
SCALE:		WEIGHT:	SHEET 1 OF 2

The following table defines standard optional features available on 808M4 series accelerometers and their part number designations for ordering.
Part number will be 808M4-ZZZZ-XX.

Option Designation -XX	Standard Optional Feature Description: Product is the same as standard product except noted below.	Customer
-01	Case with M5 stud (see figure 1)	General

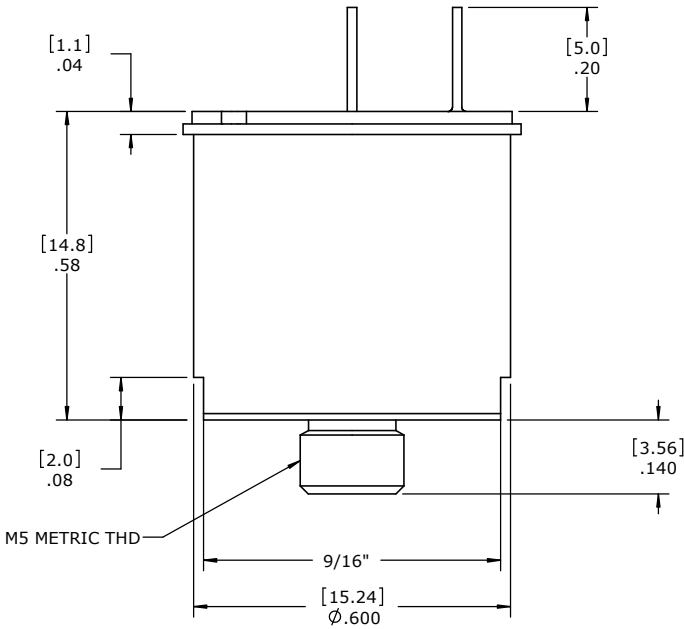


FIGURE 1

SIZE	DWG. NO.	REV
B	OD-808M4	D
		SHEET 2 OF 2